

KENWOOD

Listen to the Future

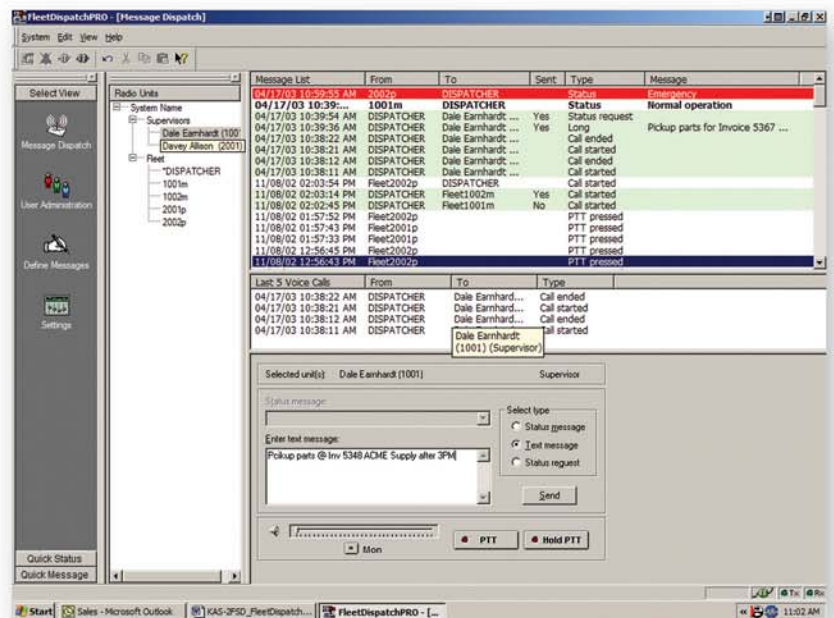


KAS-2FSD FleetDispatchPRO

FleetSync® Messaging Software

FleetSync®
by KENWOOD

FleetDispatchPRO is an easy to use FleetSync® messaging and PTT ID dispatch software for a desktop computer connected via the FleetSync® PC Serial Interface to a Kenwood 180-Series base/control station mobile. It supports FleetSync® PTT ID, Status Messaging and Short/Long Text messaging enabling a dispatcher to send, receive and log all message types to/from a mobile and portable fleet.



GENERAL FEATURES

- Base Mobile Compatibility
180-Series
- Fleet Compatibility¹
90/150/160/180-Series
90/150/160/180-Series & KDS-100
62G/63G-Series & KDS-100
- Windows® 98/Me/NT/2000/XP
- Short & Long Text Messaging
- Selective Calling
- Emergency Display & Alert (ST 99)
- Emergency Man-Down
Display & Alert (ST 98)
- Emergency Mode Off (ST 88)
- Horn Alert (ST 89)
- Easy to Use GUI
- Mouse & Keyboard Control
- Supports 4000 FleetSync® IDs
- FleetSync® Call Logging
- PTT ID
- Status Messaging

ID LIST

4000 FleetSync® IDs

EMERGENCY (ST 99) EMERGENCY MAN-DOWN (ST 98)

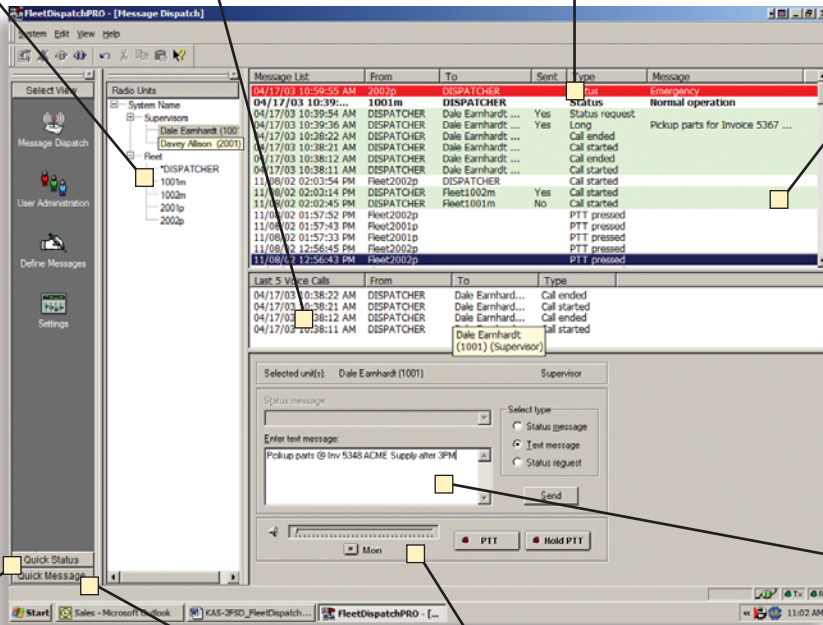
Red Flashing & Audible Alert

CALL LOGGING

PTT ID
Status Messages
Short Text Messages
Long Text Messages
FleetSync® Selective Calling

PTT ID WINDOW

Last 5 Voice Call Quick List



DATA MESSAGING CONTROL

Status Message Menu
Status Request
Short & Long Text Message
Edit Box

QUICK STATUS MENU

Most Often Used
Statuses

QUICK MESSAGE MENU

Most Often Used
Text Messages

VOICE CONTROL

Volume, PTT, Hold PTT & Monitor

footnotes from Front:

¹ A Fleet radio is any FleetSync® compatible portable, mobile or KDS-100 / mobile combination.
90-Series radios encode FleetSync® PTT ID & Emergency Status only.

Technical Specifications

Computer System Requirements

Windows® 98/Me/NT/2000/XP OS / Pentium II 450 MHz or better
10 MB of hard disk drive space / 64MB RAM / CD ROM Drive / Mouse
Super VGA color monitor or better / 1024 x 768 or higher resolution setting
1 Serial Port / 1 Parallel Port (for hardware key) / Single PC use only
Package Contents: CD ROM, Instruction Manual, Hardware Key

Mobile Station Requirements

180-Series Mobile
KMC-9C Base station Desktop Microphone recommended
DB-25 PC-Serial Cable is required (purchase aftermarket separately)

Kenwood follows a policy of continuous advancement in development. For this reason specifications may be changed without notice.

FleetSync® is a registered trademark of Kenwood Corporation.
All other trademarks are property of their respective owners.

Listen to the Future

Kenwood has always connected with people through sound. Now we want to expand the world of sound in ways that only Kenwood can, listening to our customers and to the pulse of the coming age as we head toward a future of shared discovery, inspiration and enjoyment.

KENWOOD

Kenwood U.S.A. Corporation
Communications Sector Headquarters
3970 Johns Creek Court, Suite 100, Suwanee, GA 30024-1265

Order Administration/Distribution
P.O. BOX 22745, 2201 East Dominguez St., Long Beach, CA 90801-5745

Kenwood Electronics Canada Inc.
Canadian Headquarters and Distribution
6070 Kestrel Road, Mississauga, Ontario, Canada L5T 1S8

