

KENWOOD

Listen to the Future



KGS-3

FleetSync® & NEXEDGE™/NXDN™ AVL & Dispatch Messaging Software

FleetSync®
by KENWOOD

GENERAL

- 100 Vehicle Tracking Capacity ¹
- FleetSync® Messaging & AVL²
- NEXEDGE™ NXDN™ Messaging & AVL²
- Analog Conventional & LTR® Trunked Operation
- NXDN Conventional & Trunked Operation
- Microsoft® MapPoint® 2004/2006 Compatible ³
- Imported JPG/BMP Image Maps ³
- 10 Geo Fence Boundaries (imported maps only)

FleetSync® Signaling & Messaging²

- PTT ID
- FleetSync® Call Types
- Status Messages / Request Status
- Short / Long Text Messages
- Emergency / Emergency Man-Down
- Emergency Mode Cancel
- Stun / Stun Cancel / Remote Kill
- Horn Alert

NXDN™ Signaling & Messaging²

- PTT ID
- NXDN™ Call Types
- Status Messages / Request Status
- Short / Long Data Messages
- Emergency / Emergency Man-Down
- Emergency Mode Cancel
- Stun / Stun Cancel / Remote Kill
- Horn Alert

Windows® OS Graphical Interface

- 20 Colored Vehicle Icons ⁴
- 30 Status Icons & Emergency Icon ⁴
- Screen View & Navigation Functions
- Quick Access & Shortcut Keys
- Vehicle Station Tree View List
- Vehicle Icon Tags (name, unit, status, speed, time)
- Activity History Grid with Color-Coded Call Indications
- Emergency Screen Alerts
- Mouse Map Scrolling
- Map Zoom In & Out / Centering / Default Map Position
- View & Track Selected or All Vehicles
- MapPoint® Toolbars / Map Font (5 sizes)
- Show / Hide Places
- Alphanumeric Text Message Send/Receive Display
- Recall Historical Text Messages
- Send Voice Call
- PTT Momentary / Lock Control

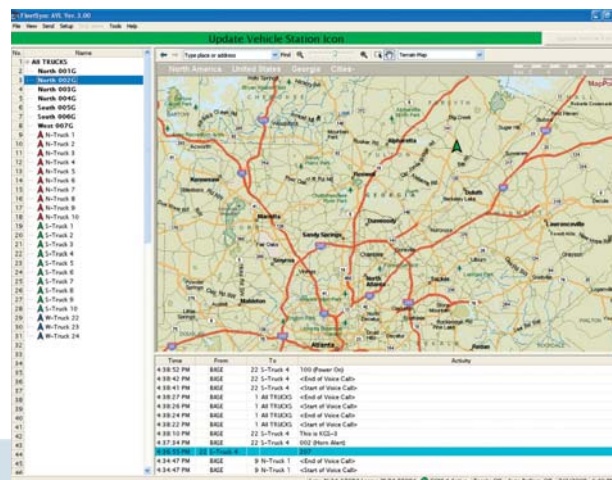
- Send Position Request
- Find Location Feature (Address, Place/Data, LAT & LONG)

Administrative Management Features

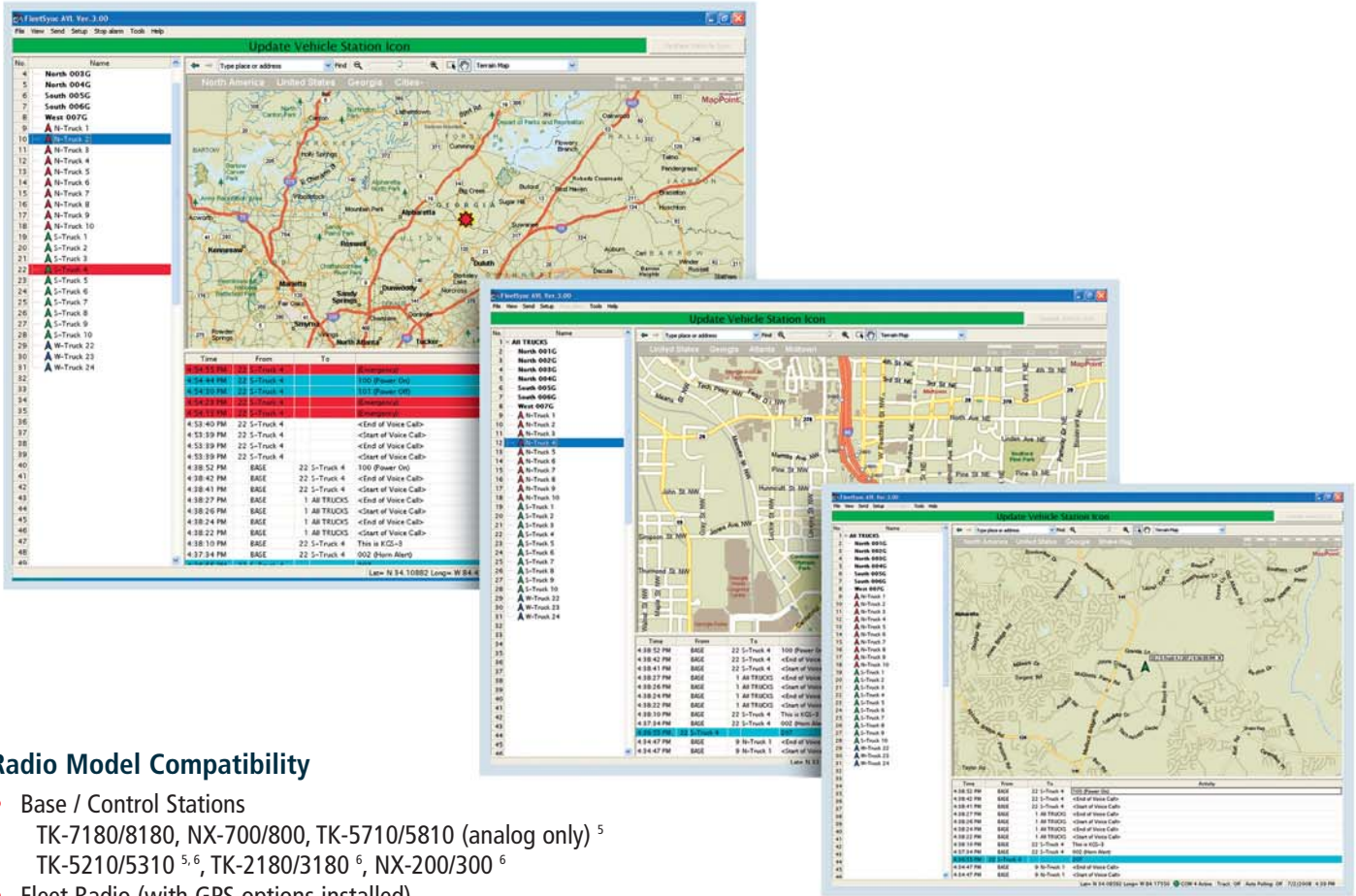
- Administrator Setup Password Protected
- Auto Polling / Auto Reporting
- Historical Logging & File Playback (Position, Voice, Messages, Status)
- Emergency & Man-Down Log File Review
- New Message & Emergency Received WAV File Import
- Default Position

Software Demonstration Mode

- No Radios Required
- Six Vehicle 60 Sec. Playback with Repeat
- Short//Long & Status Messages
- Emergency & Man Down
- Voice Call
- Geofence Warnings



Version 3.00 or later release



Radio Model Compatibility

- Base / Control Stations
 - TK-7180/8180, NX-700/800, TK-5710/5810 (analog only) ⁵
 - TK-5210/5310 ^{5,6}, TK-2180/3180 ⁶, NX-200/300 ⁶
- Fleet Radio (with GPS options installed)
 - TK-7180/8180, TK-7150/8150, TK-7160/8160 ⁷, NX-700/800, TK-780/880 ⁸
 - TK-2180/8180, TK-5210/5310 (analog only) ⁵, NX-200/300

Base / Control Station Requirements

- Compatible Kenwood mobile radio
- PC-to-Mobile Serial Interface Cable (purchase separately)
- KMC-9B/9C Desktop Base Microphone (voice call use) ⁹

Fleet Radio Requirements

- Compatible Kenwood mobile or portable radios
- Internal or external GPS Receiver & Antenna (mobiles)
- KMC-38 GPS Speaker Microphone (portables)

PC Software / Hardware Requirements

- Microsoft® Windows 2000 (SP4 or later) or XP Professional Editions (SP2 or later) ¹⁰
- Microsoft® MapPoint® 2004 / 2006 Software (purchase separately) or Imported Bitmaps ³
- Pentium III 1GHZ, 256MB, 60MB HDD free space, CD ROM, Serial port, XGA (1024x768)

Kenwood follows a policy of continuous advancement in development. For this reason specifications may be changed without notice.

FleetSync™ is a registered trademark of Kenwood Corporation.
 LTR® is a registered trademark of Transcrypt International.
 NXDN™ is a trademark of Kenwood Corporation and Icom Inc.
 NEXEDGE™ is a trademark of Kenwood Corporation.
 All other trademarks are property of their respective owners.

KENWOOD

Kenwood U.S.A. Corporation
 Communications Sector Headquarters
 3970 Johns Creek Court, Suite 100, Suwanee, GA 30024-1265
 Order Administration/Distribution
 P.O. BOX 22745, 2201 East Dominguez St., Long Beach, CA 90801-5745

Kenwood Electronics Canada Inc.
 Canadian Headquarters and Distribution
 6070 Kestrel Road, Mississauga, Ontario, Canada L5T 1S8



ISO9001 Registered
 Kenwood Corporation
 ISO9001 certification

Footnotes:

- ¹ 100 Vehicle Tracking: Practical fleet size may vary depending on type system, system loading, vehicle poll/repot rates, mixed voice/data or dedicated data channel usage. Supports single base station operation only. KGS-3 does not support single or multi-operator positions via IP-networks.
- ² KGS-3 operates in either FleetSync® analog or NXDN™ digital mode, but not both in the same installation (use of FleetSync® PC Serial Interface (protocol 2) or NXDN™ PC Serial Interface required). KGS-3 does not support: Remote Check, Remote Group Add or NXDN™ Over-the-Air Alias decode for PTT ID (per pre-programmed alias list only). KGS-3 encodes FleetSync® Short / Long Text Messages and NXDN™ Short / Long Data Messages, but subscriber unit storage / LCD display is limited to short messages. Long messages are output in the PC serial interface for use by compatible applications/hardware. The KDS-100 FleetSync® Mobile Data Unit is not compatible with NX subscriber units for analog FleetSync® or NXDN™ signaling and messaging.
- ³ KGS-3 V3.00 or later does not require MapPoint to run. Imported JPG or BMPs can also be used. Compatible with MapPoint North American Maps (English) or European Maps (English, French, German, Italian or Spanish) versions. MapPoint 2004/2006 requires 1.2 GB HDD space. The GPS Locator antenna/GPS engine accessory supplied with MapPoint cannot be connected to a Kenwood mobile.
- ⁴ Custom vehicle/status icon images can be created with icon creating software (*.ico files) and imported for use.
- ⁵ KGS-3 supports TK-5x10 models in analog mode only; requires firmware F4.10/T4.10 or later.
- ⁶ Portables support the PC Serial Interface through the ACC connector, but do not support KMC-9x desktop microphone voice calling with the KGS-3.
- ⁷ Status / Text Messaging is not available on these models.
- ⁸ Group Call not available for 80-Series (180, 160, 5x10 and NX models only).
- ⁹ KMC-9B/9C requires internal modification (contact Kenwood tech support).
- ¹⁰ KGS-3 V3.00 or later is compatible with English, French, German, Italian or Spanish versions.