

Expand Your Reach

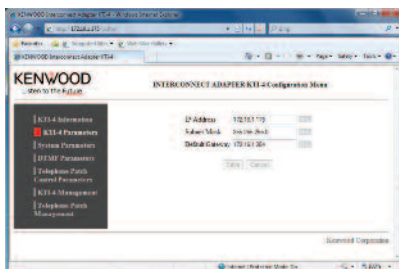
Kenwood now offers an easy way to add telephone interconnect to your NEXEDGE® trunked system.

The KTI-4 Telephone Interconnect Adapter connects NEXEDGE® NXR-700/800-based trunked systems to analog telephone patch such as the Zetron Model 30, providing outbound radio to phone system calls and phone system to radio calls. The KTI-4 serves as modulator or demodulator between the NEXEDGE® digital system and the analog PSTN/PABX system. KTI-4 units can be installed at a trunked site or anywhere in the world through a VPN connection. Offices located anywhere can call radio users on a factory floor or in the field and vice-versa.

MAIN FEATURES

- KTI-4 On-site & Off-site Installations
- Up to 6 KTI-4 Lines per Trunked Site
- Up to 100 KTI-4 Lines per Trunked Network
- Independent Inbound & Outbound Calls Enabled
- Speed Dial:
 - Limit Calls to Specific Phone Numbers / PABX Extensions
 - 255 Numbers Max. (32 digits per number)
- Call Restrictions Settings:
 - Permit / Inhibit Toll, Long Distance and International Dialing
 - Permit / Inhibit Pay Per Call Services
- AMBE+2™ Vocoder (digital / analog speech conversion)
- NXDN® Scrambler: Secure Voice in Both Directions
- DTMF Command Sets for Zetron Model 30 Setup
- DTMF Tone Timers:
 - Match Interconnect Brand / Model
 - Match Phone System Requirements
- Status LEDs: Power, Communications, Full Duplex, 100-Base TX

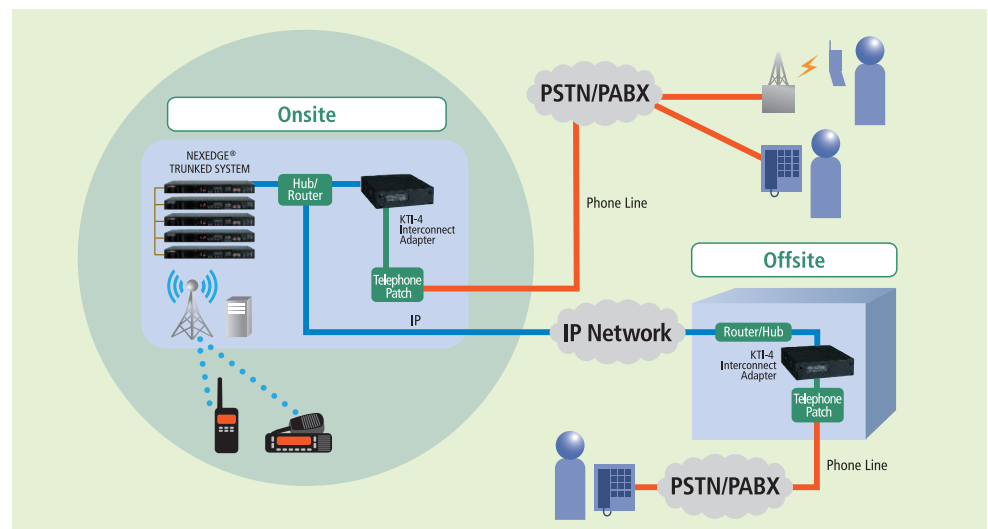
Note: The NEXEDGE® KTI-4 requires an external telephone patch that meets telephony regulations in the country of use and compatible with KTI-4 specifications (see back).



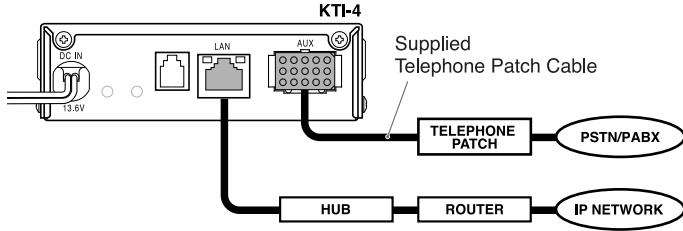
Web browser interface



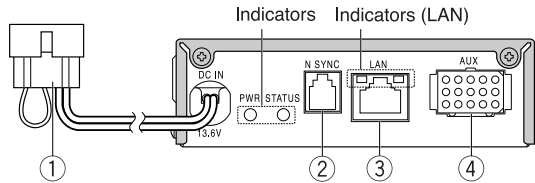
KTI-4 Interconnect Adapter



Installation and Connection



Rear



- ① **DC Power supply connector**
Connect to Repeater or external power supply.
- ② **N SYNC jack**
This jack is currently not used.
- ③ **LAN jack**
Connect to Ethernet. Use a shielded, Category 5e or higher standard LAN cable shorter than 3 meters.
- ④ **AUX jack**
Connect to Telephone Patch via the supplied Telephone Patch Cable.

Indicators

Indicator	Color	Meaning
PWR	Green	Lights while the power is ON.
STATUS	Green	Lights during communications.
LAN : Right (Full Duplex)	Green	Lights when in Full Duplex mode. Blinks when a collision status is detected in half Duplex mode.
LAN : Left (100Mbps)	Green	Lights when in 100Base-TX mode.

Main Specifications

		KTI-4
Operating Voltage	Standard	13.6 V DC
	Range	10.8 ~ 15.9 V DC
Current Rating		200 mA max.
Temperature Range		-22°F ~ +140°F (-30°C ~ +60°C)
Dimensions W x H x D (projections not included)		4.17 x 1.26 x 4.92 inches /
		106 x 32 x 125 mm
Weight		19.8 oz / 560 g
Approved Standards	FCC	Part 15 Subpart B
	IC	IC ES-003
	EMS	EN55022, EN55024
	Safety	EN60950-1, EN 60065

Listen to the Future

Kenwood has always connected with people through sound. Now we want to expand the world of sound in ways that only Kenwood can, listening to our customers and to the pulse of the coming age as we head toward a future of shared discovery, inspiration and enjoyment.

Kenwood U.S.A. Corporation
Communications Sector Headquarters
3970 Johns Creek Court, Suite 100, Suwanee, GA 30024-1265
Order Administration/Distribution
P.O. BOX 22745, 2201 East Dominguez St., Long Beach, CA 90801-5745

Kenwood Electronics Canada Inc.
Canadian Headquarters and Distribution
6070 Kestrel Road, Mississauga, Ontario, Canada L5T 1S8

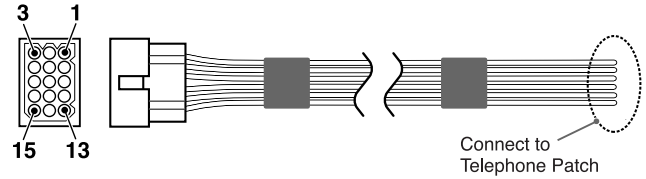
www.kenwood.com



ISO9001 Registered
Communications Equipment Division
Kenwood Corporation
ISO9001 certification

AJDS#11011 Printed in USA

Telephone Patch Cable



Pin No.	Wire Color	I/O	Pin Name	Signal type	Description
2	Blue	I	AUD IN	Analog	Audio Input from Telephone Patch. Input Level : -40 to +6 dBm (7.8 m to 1.55 Vrms) Input Impedance : 10 kΩ min
3	Green	-	A GND	A GND	Analog GND
5	White	O	AUD OUT	Analog	Audio Output to Telephone Patch. Output Level : -40 to +3 dBm (7.8 m to 1.1 Vrms) Output Impedance : 1 kΩ max
6	Violet	-	A GND	A GND	Analog GND
11	Yellow	O	PTT OUT	Digital	PTT Output to Telephone Patch. Open collector Do not supply a voltage above the DC IN value. Allowable Current : 200 mA max
13	Orange	I	PTT IN	Digital	PTT Input from Telephone Patch. 47 kΩ Pull Up to 5.0 V ± 4 % VIH : 2 to 5.5 V VIL : 0 to 0.8 V

Recommended Telephone Patch

ZETRON



Model 30*
WORLDPATCH

*Must use Model 30 Revision 1.03 or later for KTI-4 use.

Kenwood follows a policy of continuous advancement in development. For this reason specifications may be changed without notice.

AMBE+2™ is a trademark of Digital Voice System Inc.

NXDN® is a registered trademark of Kenwood Corporation and Icom Inc.

NEXEDGE® is a registered trademark of Kenwood Corporation.